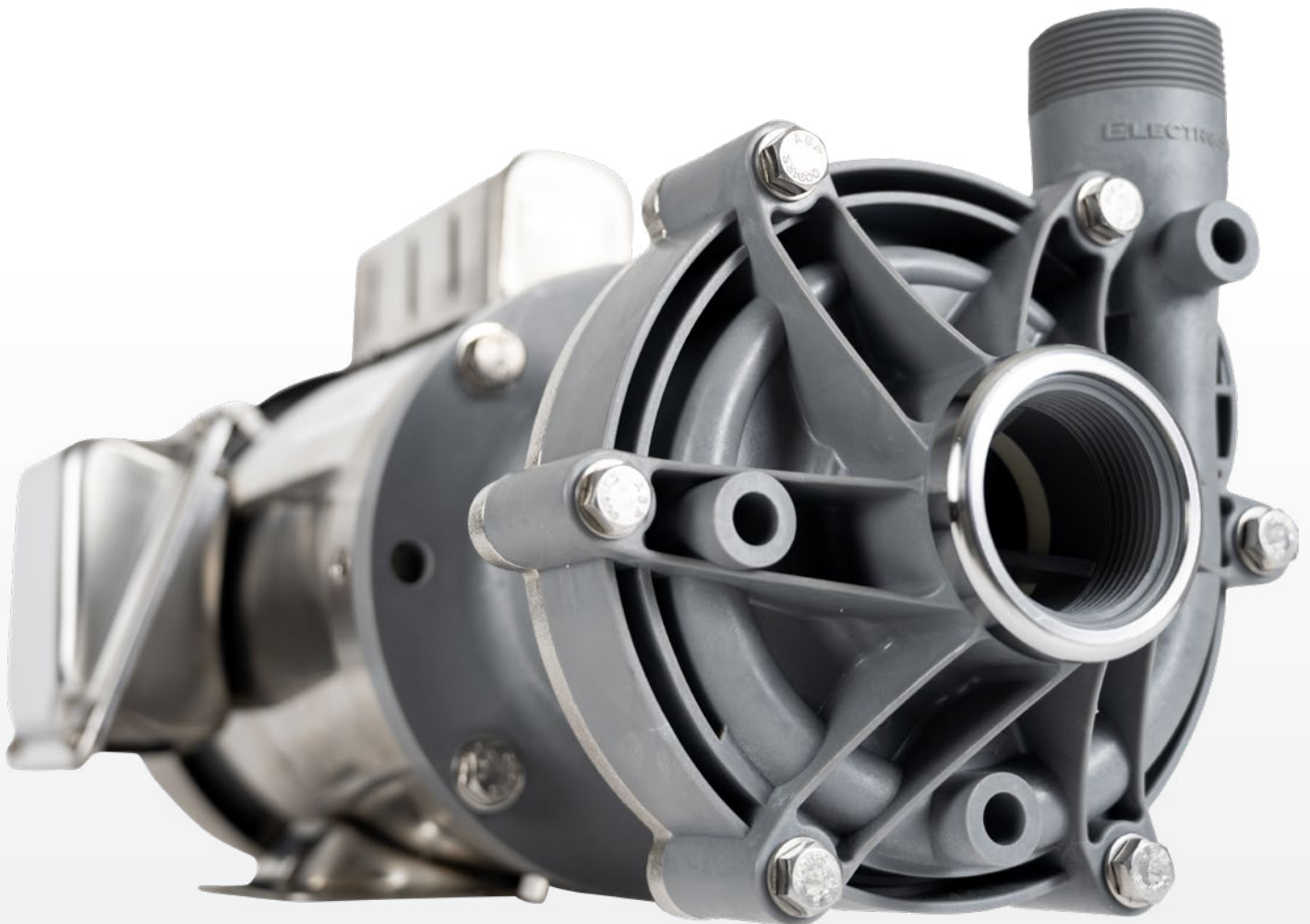


SEASTRONG®

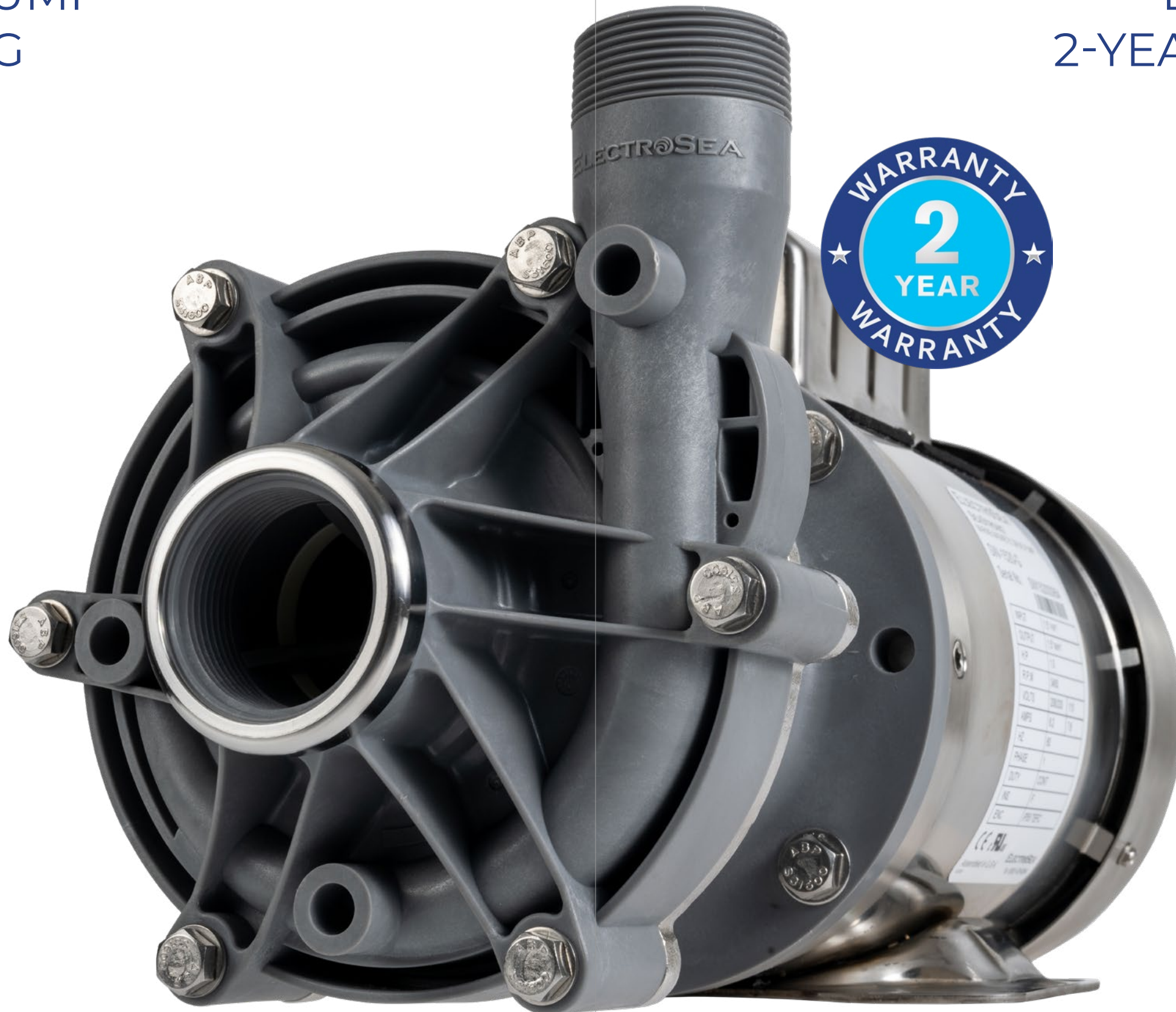
SILVER BULLET

ULTIMATE SEALLESS MARINE PUMP



AN EVOLUTION IN MARINE PUMP ENGINEERING

ElectroSea's advanced sealless magnetic-drive centrifugal marine pump delivers bulletproof reliability for your marine air conditioning, chiller, and livewell systems. Unlike traditional direct-drive pumps that leak at the shaft seals, the SeaStrong® Silver Bullet pump has no shaft seal and instead uses a magnetic close-coupled design. SeaStrong Silver Bullet is based on millions of actual run hours in the toughest conditions aboard marine vessels. ElectroSea's patent-pending pump design features have been engineered into SeaStrong Silver Bullet to provide superior performance and reliability you can trust. SeaStrong is an evolution in marine pump engineering for chilled water or seawater applications.



SUPPORTED BY ELECTROSEA'S 2-YEAR WARRANTY

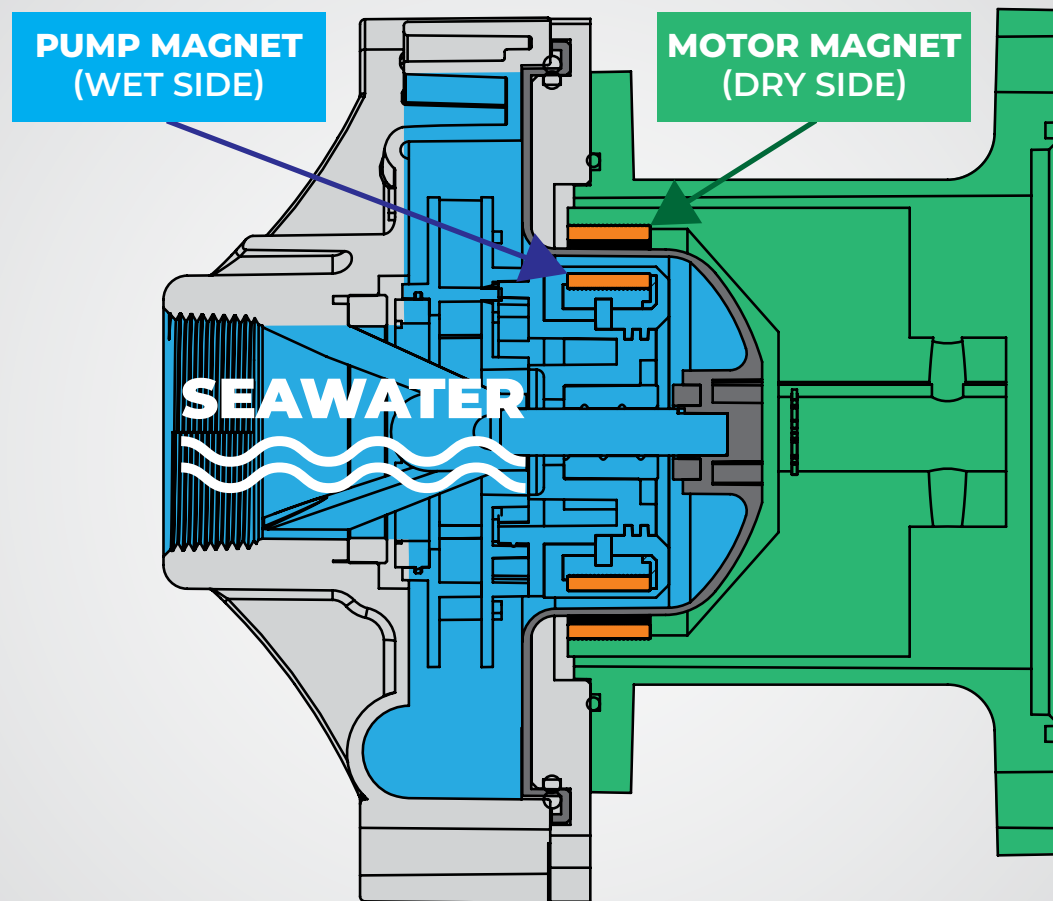
ElectroSea is a world leader in seawater management products for marine vessels. From initial idea to final product, ElectroSea is dedicated to finding "a better way."

SeaStrong Silver Bullet is designed, assembled, and quality-control tested in-house by our engineering and manufacturing teams at our headquarters in Minneapolis, Minnesota, USA. As a result, SeaStrong Silver Bullet is backed by ElectroSea's 2-year parts and labor warranty.*

Our high standards of excellence and unwavering dedication to customer service have firmly established ElectroSea as one of the most trusted leaders in marine products today.

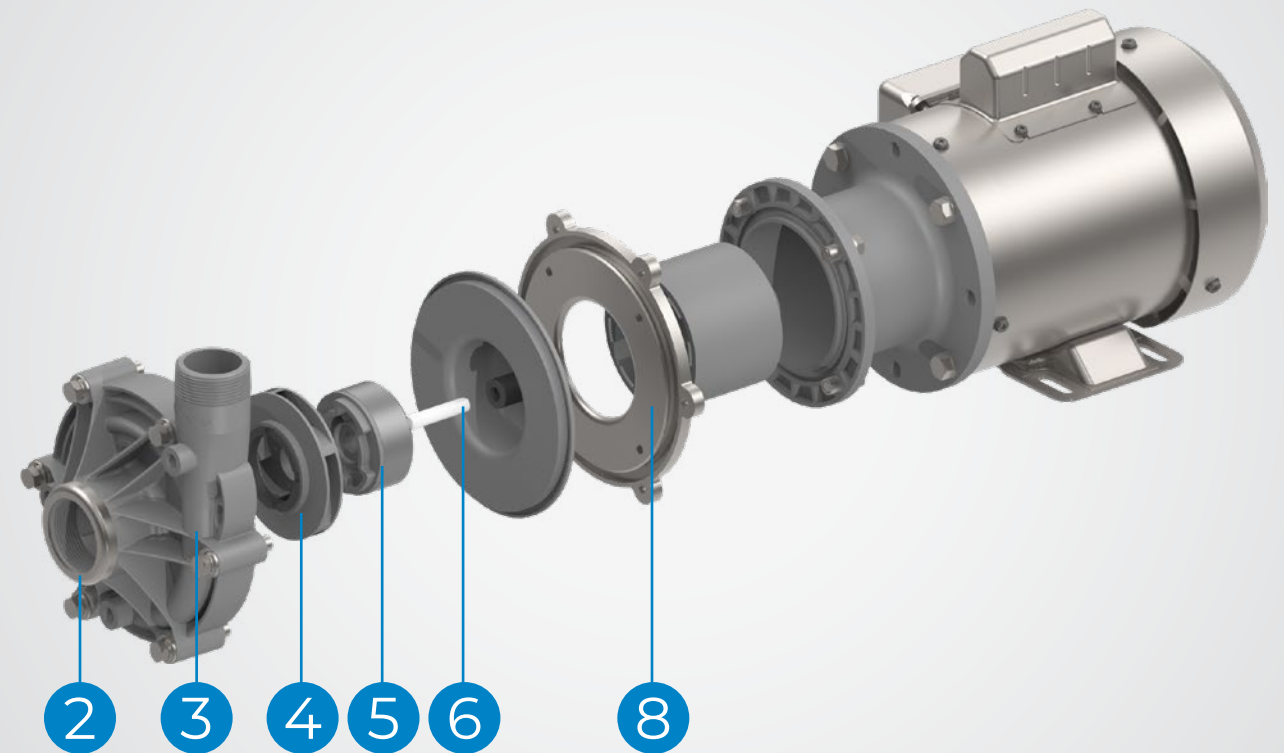
**SeaStrong pumps are eligible for a 2-year parts and labor warranty when paired with ElectroSea's ElectroStrainer® or ClearLine® System.*

ENGINEERED FOR PERFORMANCE IN SEAWATER



1 SEALLESS MAGNETIC DRIVE

SeaStrong sealless magnetic-drive pumps offer distinct advantages when used in seawater applications. The corrosive nature of seawater can lead to rapid deterioration of traditional pump seals, resulting in potential leakage and frequent maintenance. SeaStrong features a wet side and a dry side that are magnetically coupled without a mechanical seal. This design characteristic enhances the overall reliability of the pump in challenging marine conditions. The efficiency of sealless magnetic-drive pumps also contributes to their effectiveness in seawater, as they can efficiently handle the varying flow rates and pressures often encountered in marine systems. In essence, SeaStrong sealless magnetic-drive pumps provide a robust, corrosion-resistant reliable solution for pumping seawater in your boat, making them an excellent choice for recreational boats, from center consoles to sportfish to luxury yachts.



2 REINFORCED INLET PREVENTS CRACKING

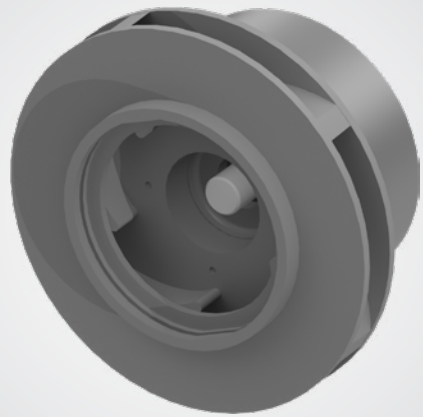
A reinforced inlet ring is molded into the pump head and made from (316L) stainless to provide extra strength at the connection point to prevent cracking (patent pending).



3 ADVANCED PUMP HEAD PREVENTS MARINE GROWTH

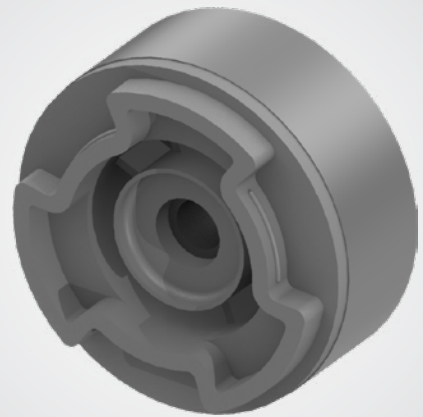
The advanced pump head is engineered using Computational Fluid Dynamics to have no low-flow or dead spaces, preventing unwanted marine growth (patent pending).





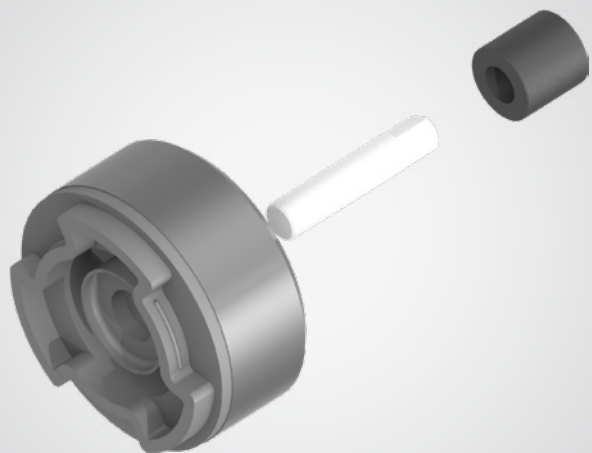
4 NON-METALLIC IMPELLER FOR LONG LIFE

The long-lasting composite impeller will not wear out or corrode over time, allowing the highly efficient impeller to provide the high flow that is ideal for air conditioners, chillers, and livewells.



5 SEALED MAGNET FOR MAXIMUM DRIVE

A completely sealed, super-strong composite-molded-over-neodymium magnet connects the wet end to the motor drive without any seals.

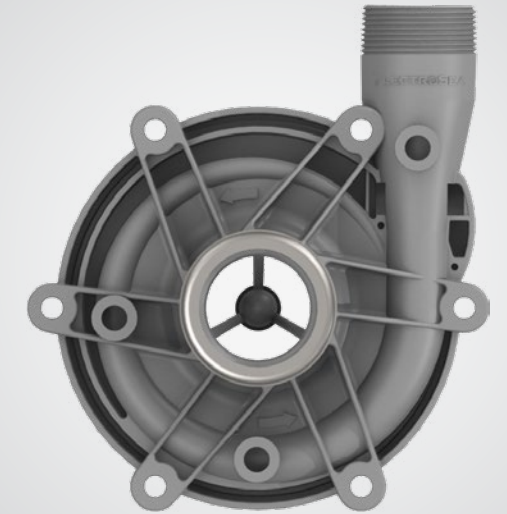


6 ULTRA-LOW FRICTION SHAFT AND BUSHINGS

The ultra-low friction ceramic shaft and carbon graphite bushings are infused with proprietary materials to dissipate heat efficiently for extended life span.

7 COMPOSITE PUMP HEAD WITH NO METALLIC PARTS

The advanced glass fiber-reinforced composite pump head has a high temperature resistance and no metallic parts in the seawater path for superior reliability and longevity.



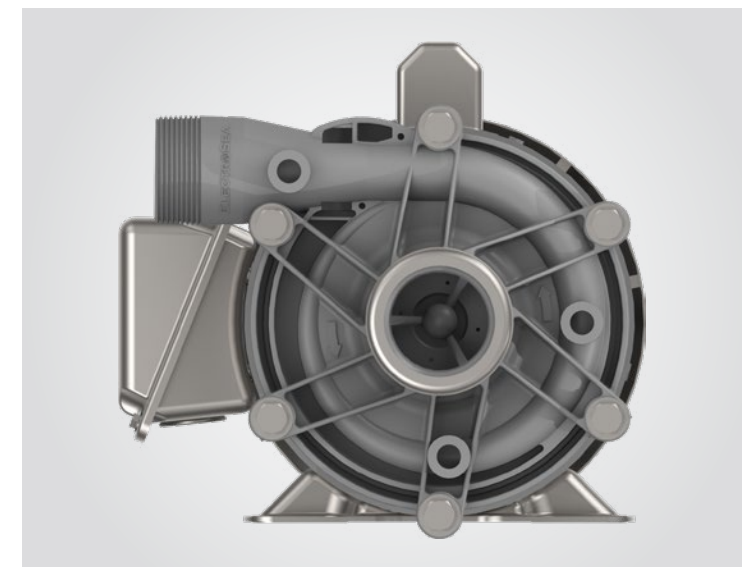
8 316L STAINLESS PREVENTS CORROSION

The high-grade (316L) stainless motor-to-pump connection plate and (316L) hardware prevents corrosion and keeps the pump in tip-top shape.



9 ROTATABLE PUMP HEAD FOR FLEXIBILITY

The pump head can be rotated for flexible installations where space for the outlet connection is limited.



PERPETUALLY MAINTAINS ITS PRISTINE APPEARANCE

SeaStrong Silver Bullet features a stainless-steel IP55-rated washdown motor that provides protection against water jets by a nozzle from any direction. The totally enclosed, fan-cooled (TEFC) motor has sealed bearings, stainless-steel output shaft seals, and a stainless housing that resists tarnish or corrosion and always looks good.



ELECTROSEA SEASTRONG MARINE MAGNETIC DRIVE PUMP	
SW-1520-G	
Serial No.	SW152000954
INPUT	1.5" FNPT
OUTPUT	1.5" MNPT
H.P.	1.0
R.P.M.	3450
VOLTS	208/230 115
AMPS	8.2 7.6
HZ	60
PHASE	1
DUTY	CONT
INS.	F
ENC.	IP55 TEFC
Assembled in U.S.A. ELECTROSEA Tel: (903) 475-8994	



SeaStrong with IP55 washdown stainless-steel motor is built to last

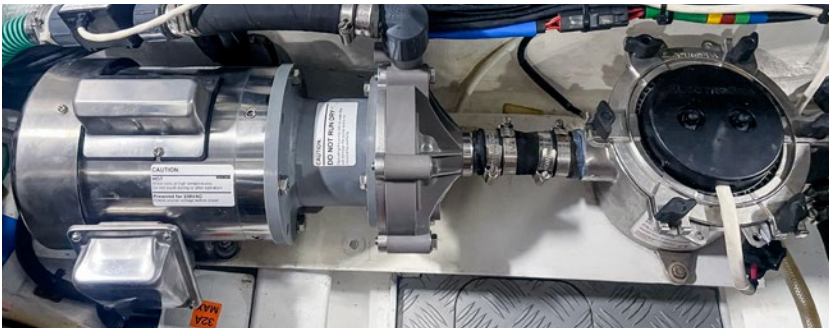
IDEAL FOR ALL VESSEL TYPES



Ask for SeaStrong Silver Bullet for your new-build project or refit for your air-conditioner, chiller, or livewell. SeaStrong is an option on many of the leading sportfish and luxury recreational boat brands.

SeaStrong is a direct replacement for other manufacturers, including Calpeda, Cruisair, Dometic, Grundfos, March, MP Pumps, Oberdorfer, and Scot. Most orders ship the same day they are received, and we can expedite shipments as necessary.

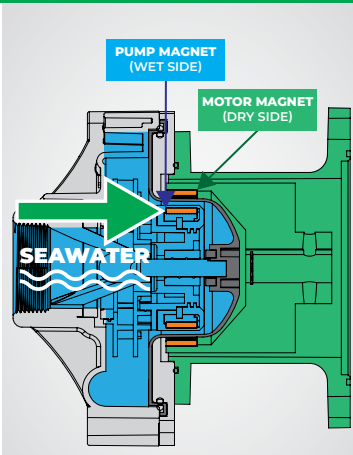
ElectroSea's global network of certified dealers and installers provides support wherever your travels take you in the world.



ADVANCED FEATURES FOR

SEASTRONG SILVER BULLET

SeaStrong's sealless magnetic-coupled design has no mechanical shaft seal and will not leak.



OTHER MARINE PUMPS

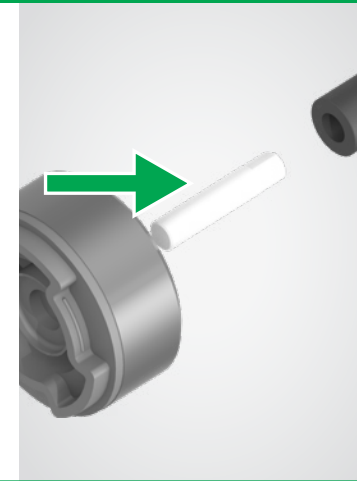


Traditional direct-drive pumps leak at the shaft seal causing them to fail.

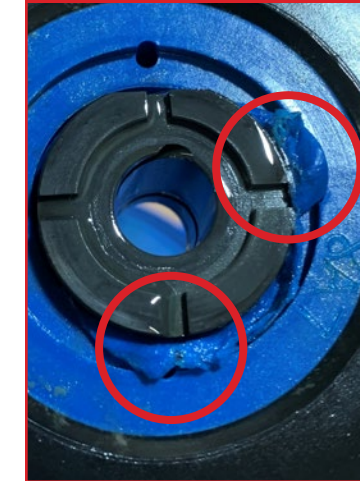
RELIABLE SEAWATER PERFORMANCE

SEASTRONG SILVER BULLET

The ultra-low friction ceramic shaft and carbon graphite bushings are infused with proprietary materials to dissipate heat efficiently for extended life span.



OTHER MARINE PUMPS



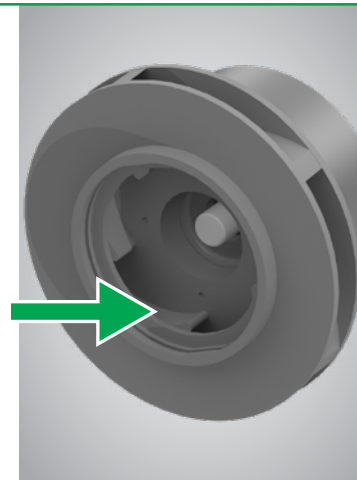
Lower-grade composites are more susceptible to overheating, premature wear, and failure due to friction.

A reinforced inlet ring that is molded into the pump head and made from (316L) stainless provides extra strength at the connection point to prevent cracking.



Unreinforced heads crack if excessive force is used or the threads are compromised.

The glass-fiber reinforced composite pump head has no metallic parts in the seawater fluid path that can corrode or fail.



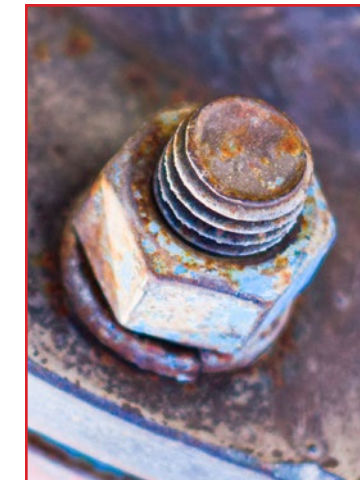
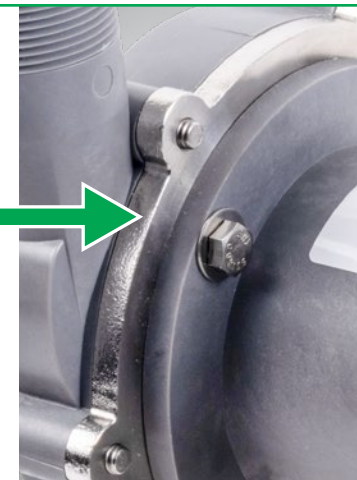
Metallic parts in the seawater fluid path are susceptible to corrosion, erosion, cavitation, and eventual failure.

The advanced pump head has no low-flow or dead spaces, preventing unwanted marine growth.



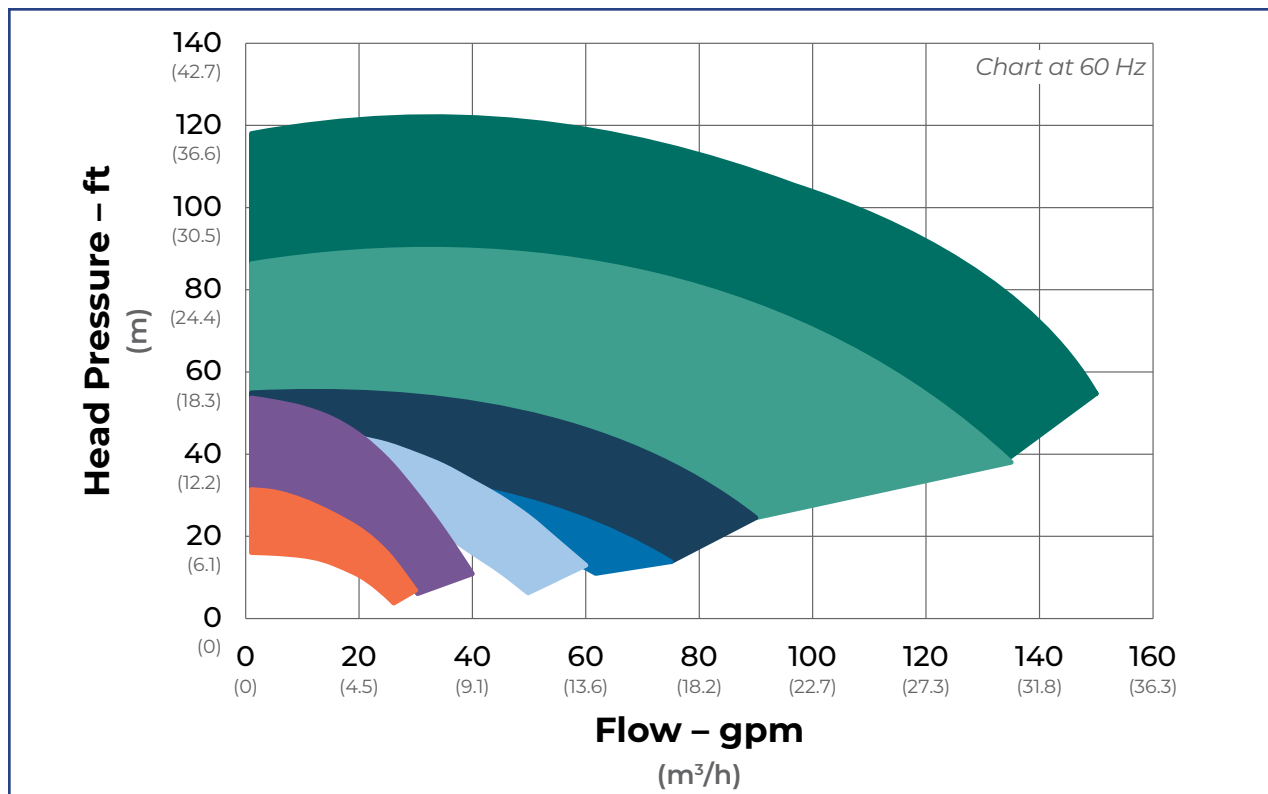
Other pump-head designs facilitate marine growth with low-flow or dead spots.

The high-grade (316L) stainless motor-to-pump connection plate and (316L) hardware prevents corrosion and keeps your pump in tip-top shape.



Other pumps use low-grade painted steel hardware that is not made for the marine environment.

25 MODELS TO FIT YOUR BOAT



MODEL SERIES	MAX FLOW (gpm) @ 60 Hz	MAX HEAD (ft) @ 60 Hz	MAX FLOW (m ³ /h) @ 50 Hz	MAX HEAD (m) @ 50 Hz
SB-030	30	31	5.7	6.7
SB-045	40	54	6.8	11.4
SB-062	60	46	11.4	9.7
SB-075	75	35	13.6	7.8
SB-100	95	59	19.3	12.6
SB-137	135	90	28.4	20.4
SB-150	150	121	30.7	26.1

To find your SeaStrong Silver Bullet pump, visit www.electrosea.com.