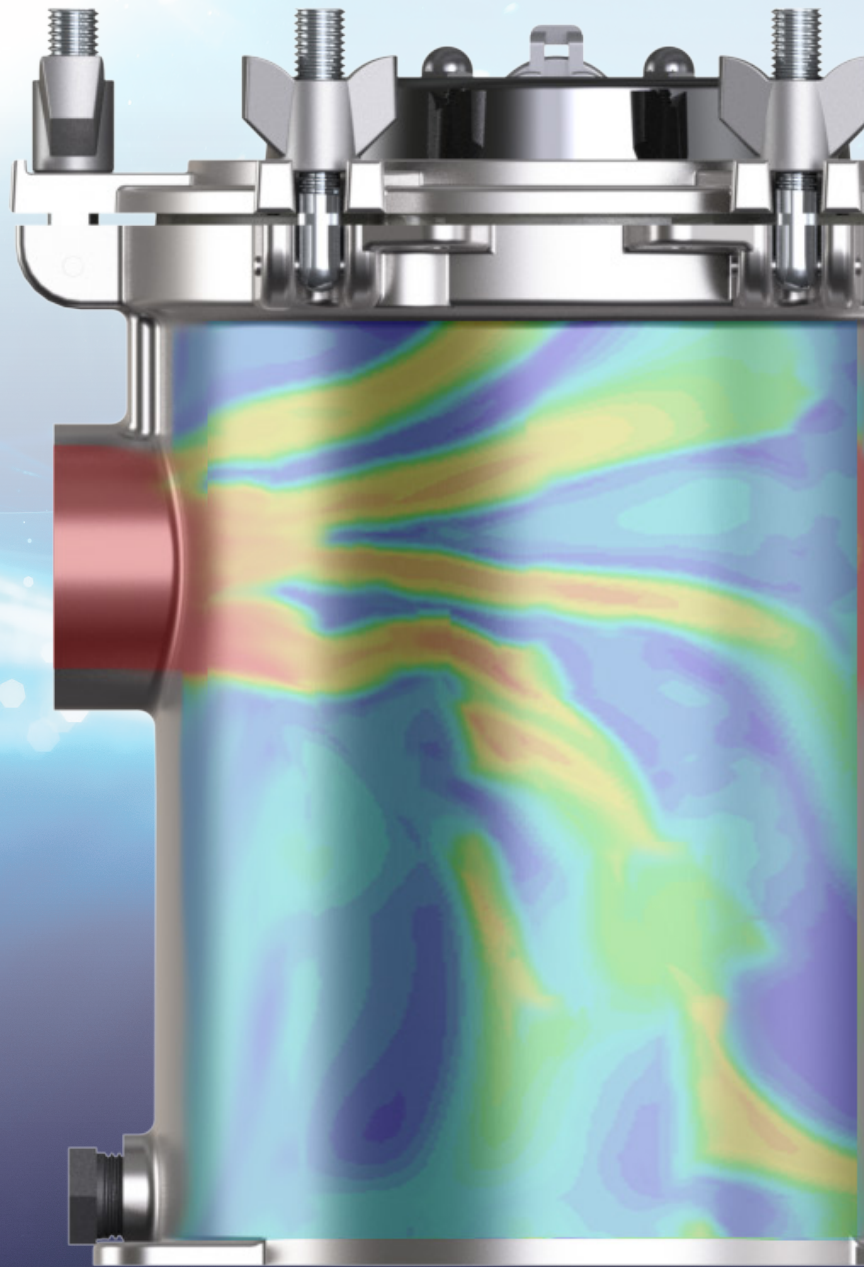


**ELECTROSEA®**

**Revolutionary Biofouling Prevention  
and Straining System**



**ELECTROSTRAINER™**

# HELLO ELECTROSTRAINER.

## GOODBYE FOULED BASKETS.

Finally, a revolutionary System that prevents barnacles and marine growth from forming in your boat's seawater circuit - from the integrated strainer basket to all seawater pipes. With ElectroStrainer, frequent visits to the engine room to scrub your strainer basket are over; and seawater supply lines remain free and clear of marine growth, ensuring optimal flow rates to air conditioners, chillers, and refrigerators.

### MARINE GROWTH: a never ending battle



Old Strainer  
4 weeks



Seawater Pipes

Unwanted marine growth, biofouling and barnacles in your sea strainer and pipework is a constant battle. After you finish scrubbing the strainer basket and place it back into service, biofouling begins again. Barnacles grow in pipework, and air conditioners chirp with low water flow, high-pressure alerts. Eventually you have to acid descale with harsh chemicals, at great expense and days of downtime.

### TECHNOLOGY TRIUMPHS: ElectroStrainer



ElectroStrainer  
4 weeks



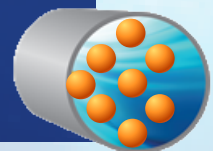
Seawater Pipes

ElectroStrainer generates a safe and effective level of chlorine in its strainer basket as seawater enters the boat. Treated seawater flows through pipes to the entire cooling system. Unlike basic sea strainers that require frequent manual checks in the hot engine room, ElectroStrainer remains free and clear of marine growth. If debris enters ElectroStrainer, its "Strainer Alert" technology will automatically notify you.

### ENVIRONMENTALLY-FRIENDLY, LOW-MAINTENANCE AND NO ADDITIVES

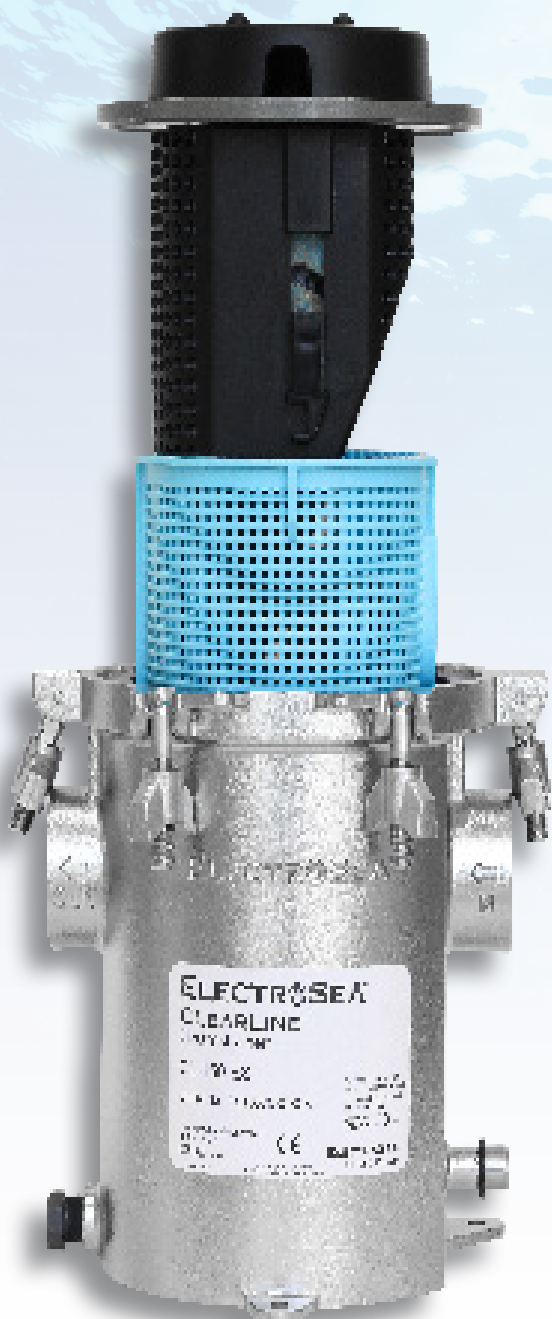
ElectroStrainer generates a consistent, low-level of chlorine; lower than you'll find in tap water but enough to keep barnacles at bay. No chemical additives or acids are required. ElectroStrainer provides long-term, reliable operation, with no scheduled maintenance.

Seawater +  
DC Current =  
**Chlorine**



## ALL-IN-ONE SYSTEM.

ElectroStrainer integrates three components into an all-in-one System for total seawater protection: a revolutionary biofouling prevention device, an integrated hydrodynamic strainer, and a smart flow-monitoring system.



### BIOFOULING PREVENTION DEVICE

When seawater enters the ElectroStrainer, it passes electrified plates coated with a proprietary mixed metal oxide catalyst that generates chlorine. This process creates an environment where barnacles simply can't live.

### HYDRODYNAMIC STRAINER







ElectroStrainer's integrated strainer is hydrodynamically optimized to diffuse chlorinated seawater throughout the entire basket. ElectroStrainer's basket has a large surface area with minimal pressure drop.



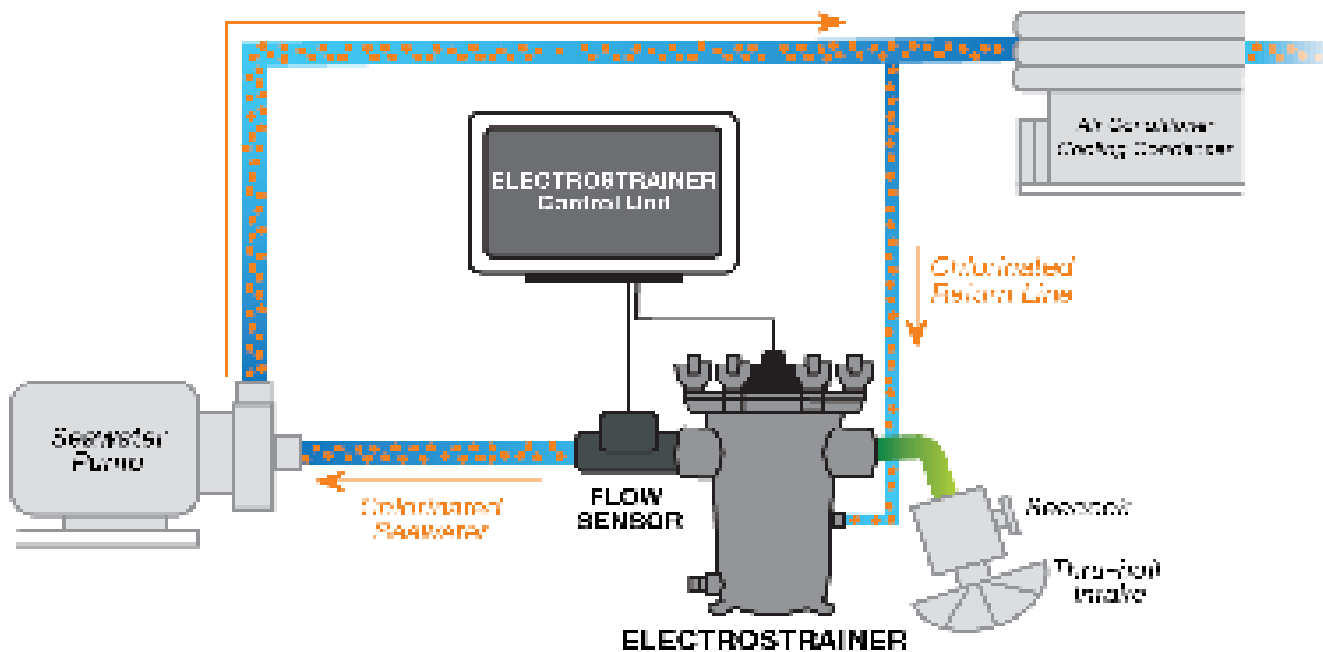
### SMART FLOW MONITORING SYSTEM

ElectroStrainer alerts you if the strainer needs attention. You will know how much protected seawater is flowing through your system at all times with ElectroStrainer's real-time flow display.

# ELECTROTRAINER PRODUCT LINE

PUMP SWITCHING MODELS		STANDARD MODELS			
<b>ES-200-PS</b>  <ul style="list-style-type: none"> <li>• 2" NPT (DN50)</li> <li>• <b>OPTIMAL FLOW</b> 20-40 gpm</li> <li>• <b>MIN / MAX FLOW</b> 10-75 gpm</li> </ul>	<b>ES-150-PS</b>  <ul style="list-style-type: none"> <li>• 1.5" NPT (DN40)</li> <li>• <b>OPTIMAL FLOW</b> 12-30 gpm</li> <li>• <b>MIN / MAX FLOW</b> 8-50 gpm</li> </ul>	<b>ES-200</b>  <ul style="list-style-type: none"> <li>• 2" NPT (DN50)</li> <li>• <b>OPTIMAL FLOW</b> 20-40 gpm</li> <li>• <b>MIN / MAX FLOW</b> 10-75 gpm</li> </ul>	<b>ES-150</b>  <ul style="list-style-type: none"> <li>• 1.5" NPT (DN40)</li> <li>• <b>OPTIMAL FLOW</b> 12-30 gpm</li> <li>• <b>MIN / MAX FLOW</b> 8-50 gpm</li> </ul>	<b>ES-125</b>  <ul style="list-style-type: none"> <li>• 1.25" NPT (DN32)</li> <li>• <b>OPTIMAL FLOW</b> 6-17 gpm</li> <li>• <b>MIN / MAX FLOW</b> 4-30 gpm</li> </ul>	<b>ES-100</b>  <ul style="list-style-type: none"> <li>• 1" NPT (DN25)</li> <li>• <b>OPTIMAL FLOW</b> 3-12 gpm</li> <li>• <b>MIN / MAX FLOW</b> 3-20 gpm</li> </ul>

## ELECTROTRAINER REPLACES EXISTING SEA STRAINER



**ELECTROSEA®**

(952) 475-8084  
 (888) 384-8881  
[www.electrosea.com](http://www.electrosea.com)

© 2022 ElectroSea. All Rights Reserved.  
 U.S. Patent No. 11,027,991 and other U.S. and Foreign Patents Pending

AD-7 REV A